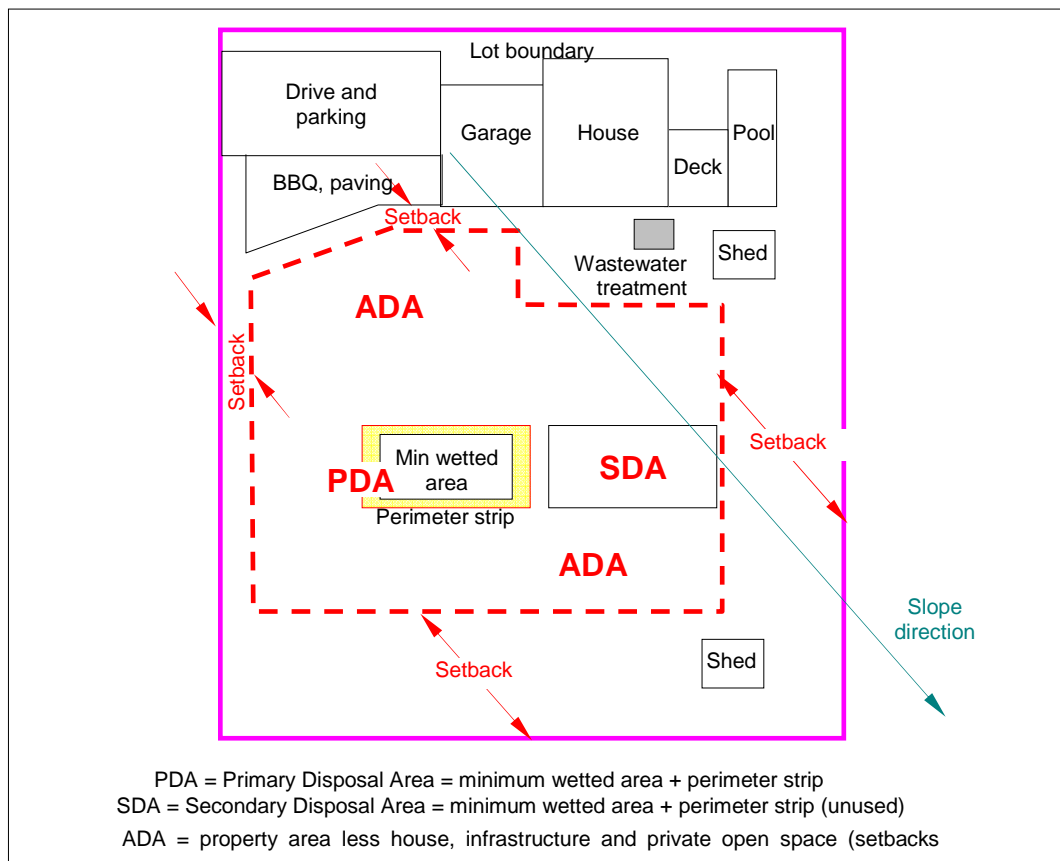
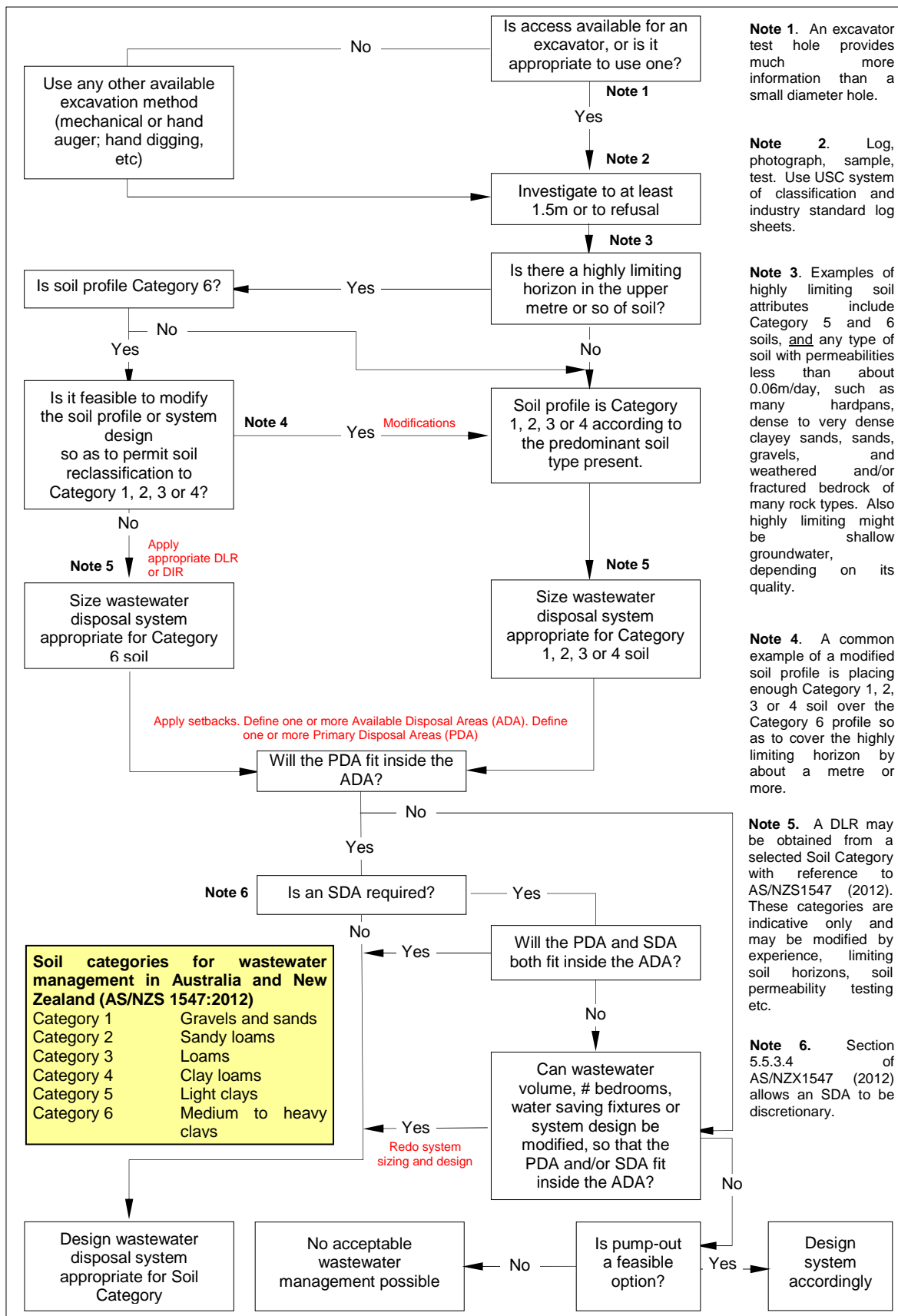


A structured approach to site assessment for domestic wastewater management



Schematic plan showing the relationship between property size and various areas within the property related to wastewater management. Setbacks are measured parallel to slope direction. See the accompanying flow chart for an example of how soil Category, thickness and land area may affect the way wastewater is managed on the property.

A structured approach to site assessment for domestic wastewater management



Example flow chart for on-site wastewater assessment in Tasmania

Elements of this flow sheet have been influenced by Schedule 12 of the Tasmanian [Sorell Council's Planning Scheme](#) 1993 (amended 10 Aug 2011). Other approaches may be acceptable.