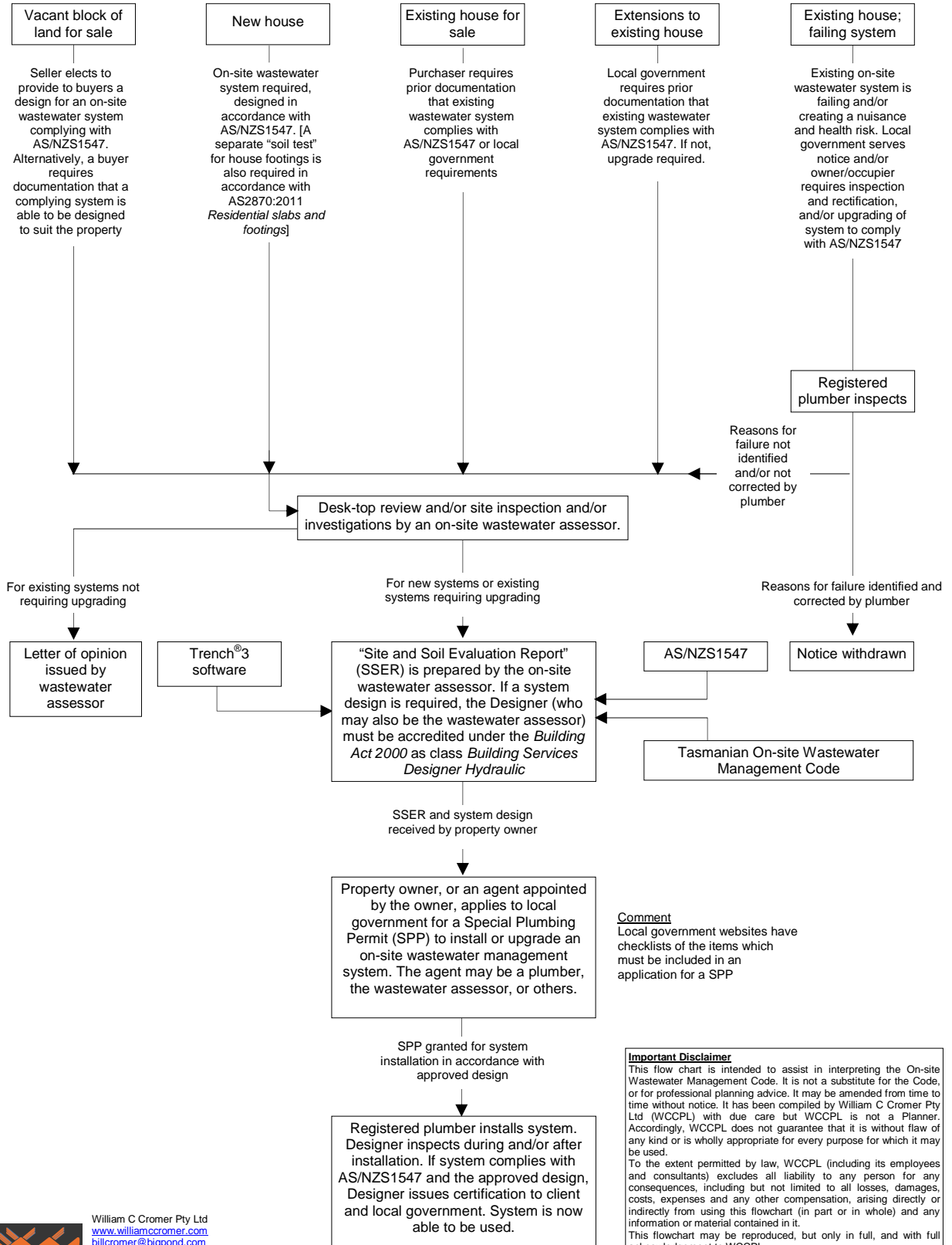


## THE TASMANIAN PROCESS FOR OBTAINING AN APPROVED ON-SITE WASTEWATER MANAGEMENT SYSTEM

Residential property in an un-sewered area requires an on-site wastewater management system. New or upgraded existing systems must comply with AS/NZS1547 *On-site domestic wastewater management*, and the Tasmanian *On-site Wastewater Management Code E23*. The Code is intended to ensure that land use and development requiring on-site wastewater management will have access to sufficient land necessary for the satisfactory and sustainable treatment of that wastewater. A separate flowchart shows how the Code is applied.



**Important Disclaimer**  
 This flow chart is intended to assist in interpreting the On-site Wastewater Management Code. It is not a substitute for the Code, or for professional planning advice. It may be amended from time to time without notice. It has been compiled by William C Cromer Pty Ltd (WCCPL) with due care but WCCPL is not a Planner. Accordingly, WCCPL does not guarantee that it is without flaw of any kind or is wholly appropriate for every purpose for which it may be used.  
 To the extent permitted by law, WCCPL (including its employees and consultants) excludes all liability to any person for any consequences, including but not limited to all losses, damages, costs, expenses and any other compensation, arising directly or indirectly from using this flowchart (in part or in whole) and any information or material contained in it.  
 This flowchart may be reproduced, but only in full, and with full acknowledgement to WCCPL.